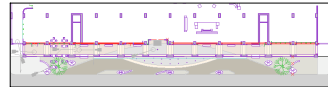


1-2 CADD FILES

07_197 model.pln
 building model used for trying **entrance redesign preliminary designs**, walkthroughs, renderings and plan drawings;
 for SD-DD-CD the design can be developed in 07_197 model2.pln



Layer combinations:
 working model ext
 working model ext new



07_197 model 2.pln
 tower story floor plan **drawings**, corridor floor plan **drawings**, FF&E quantities **schedules**
 room matrix **schedule** (export as tabbed text, paste in *OW Schedule YMMDD.xls*)

2007_197 rooms case.pln
 ~53 room plans
 room plan **drawings**
 room **walkthroughs**
 rooms FF&E list **schedules**
 room-to-bldg **.MOD factory**

2007_197 rooms pres 2.pln
 room plans generator, used for As-builts, outdated

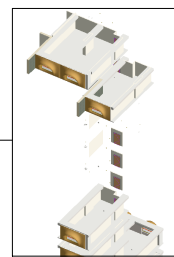
MODEL MODULES

room depot.pln
 -bring in from module folders one instance of each .MOD using Hotlink Manager
 - select modules in plan, copy to paste in bldg file ('Suspend Groups' unchecked); pasted modules keep link to original in module folder

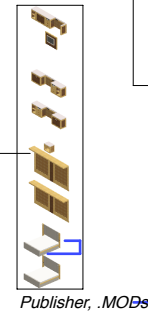
casework depot.pln
 -bring in from module folders one instance of each .MOD using Hotlink Manager
 - select modules in plan, copy to paste in unit plans ('Suspend Groups' unchecked); pasted modules keep link to original in module folder

casework factory.pln
 100+ FF&E pieces

module factory 2.pln
 ~10 room partition modules
 ~25 room shell modules



Publisher, .MODs



Publisher, .MODs



drawings to 07_197 CD-LBK.pln

View folders
 3D walkthrough
 Floor Plan Demo
 Floor Plan
 RCP Demo
 RCP
 Furniture Plans
 Schedules
 Room-to-bldg mods ----> Publisher



View folders in 00 As-Builts A-100 Plans

drawings to 07_197 CD-LBK.pln

- Publish
- Place Module
- Copy-Paste
- Hotlink created by copy-paste

Make sure the hotlink is updated in depot before copy-pasting. Bad things happen when a non-updated module is pasted into another file -- you are not pasting objects but a link to a file. Same thing if there are existing instances of the hotlink in the destination file and link is not updated there.

Do not Undo drag-rotate-elevate of modules: adjust location without undoing, or delete, insert/paste new instance, and move to position. Modules with undone moves appear in different locations after updating.

Keep hotlinks relative so as to be able to copy/move entire folder to other computer or server and keep links working ('absolute' will look for original location regardless of new location of module destination file)

WORK FILES

PUBLISHED MOD FILES
 don't work on these, published from source folder and inserted only once into corresponding depot file via Hotlink Manager

MODULES

Room plan component modules:
 - Shell (structure, envelope) .MODs
 - Infill (partitions, ceilings, MPE) .MODs

MODULES INTERIORS

FF&E modules:
 - bathroom accessories .MODs
 - casework .MODs
 - lighting fixtures .MODs
 - mirrors .MODs
 - upholstery .MODs

MODULES ROOM SCHED

room-to-bldg (geom + infill + FF&E) .MODs

- Shell A1-05.MOD
- Shell A1-06.MOD
- Shell A1-19.MOD
- Shell B1-05.MOD
- ROOM A.MOD
- ROOM B-A.MOD
- ...

- BA-01.MOD
- BA-02.MOD
- ...
- CSG-01.MOD
- CSG-01 Q bed T-1 L.MOD
- CSG-01 Q bed T-1 R.MOD
- CSG-01A K bed T-2 L.MOD
- CSG-01A K bed T-2 R.MOD

- HSL2-05.MOD
- HSLC-05.MOD
- HSLC-524.MOD
- HSLC-typ.MOD
- HSR2-05.MOD
- HSRC-05.MOD
- ...